

for the **INSULIT** range

**NEW
version**

**Sticks on the underlay,
doesn't glue to the wall**

Lfoam 18

Self-adhesive perimeter strip

ACOUSTIC AND THERMAL SEAL WITH PYRAMIDAL STRUCTURE

Applications

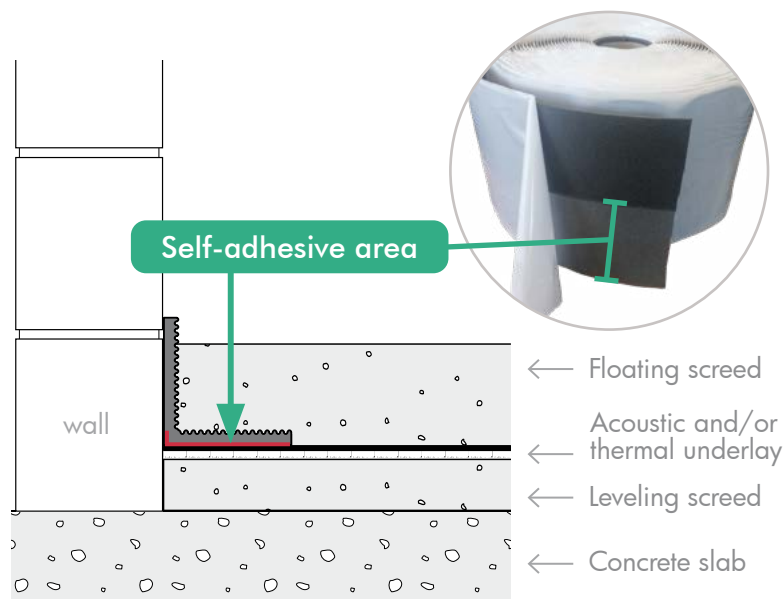
- insulit Bi+8
- insulit Bi+9
- insulit Bi+20
- insulTop 15
- insulPano HF35

Benefits

- 50% of adhesive area : sticks on the underlay, doesn't glue to the wall !
- Acoustic & thermal
- Very easy to cut
- In roll, easy & quick installation
- Pyramidal structure : easy folding

Lfoam 18 is a perimeter strip with a pyramidal structure. It is dedicated to acoustic and/or thermal underlays from the insulit range under a floating screed. The strip avoids any lateral contact between the screed and the building.

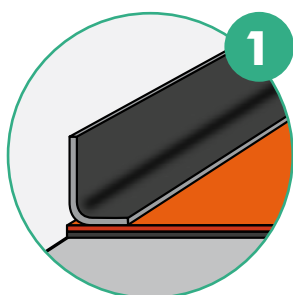
Lfoam is placed at a right angle, at the junction between the underlay horizontally unrolled and the wall. The strip easily bends to ease the installation, half of the surface glues to the underlay. When cutting, the vertical part does not stick to the wall, it is easily removed.



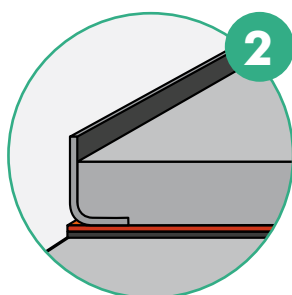
Lfoam 18

Installation

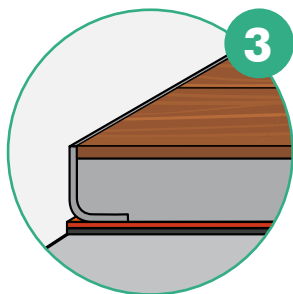
- Once the insulit underlay is laid on the slab or on the levelling screed, then make a flush cut with the underlay at the base of the wall.
- Place Lfoam just before making the screed. Remove the protective film and fix by pressing the self-adhesive part on the underlay. The non-adhesive is placed rising against the wall.
- Immediately pour the screed.
- Cover the screed with the floor covering.
- Cut the excess of Lfoam with a sharp blade. Remove the foam that exceeds the floor covering.
- Lay the baseboard and make a flexible joint under it.



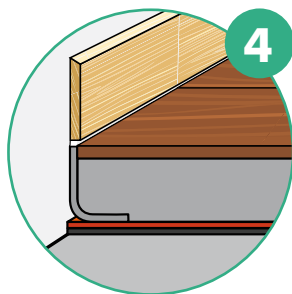
Glue the Lfoam on the underlay, rise the non-adhesive part alongside the wall.



Ensure it is correctly sealed before pouring the screed.

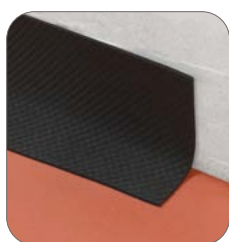


Cut the excess of Lfoam once the floor covering is laid.



Lay the baseboard few millimeters above the covering and make a flexible joint.

Suitable for all the insulit range



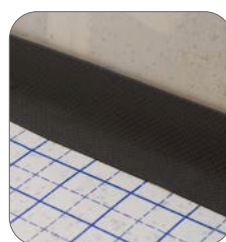
insulit Bi+8



insulit Bi+9



insulit Bi+20



insulPano HF35



Sticks on the underlay, doesn't glue to the wall !

Characteristics

Material : physically crosslinked PE foam with a unique pyramidal structure

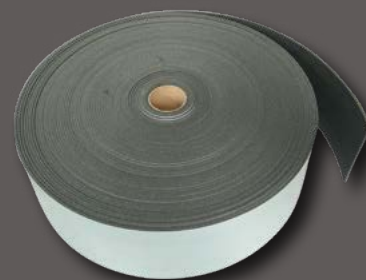
Thickness : ±5 mm

Length : 50 m

Width : 18 cm

Color : black

With glue on half of the surface (with protective cover paper)



insulco srl • Z.I. Sud (1) • Rue Buisson aux Loups, 1a • 1400 Nivelles • Belgium
Phone : 067/41 16 10 • Fax : 067/41 16 16 • insulco@insulco.be
Web : www.insulco.be

All information provided is the result of studies and experience. It is communicated in good faith, but may under no circumstances constitute a guarantee on our part, nor engage our liability, even if the rights of third parties are violated.
Entreprise number: 0405.642.815 - RPM Nivelles - Edition 04/2022.

insulco
insulation products