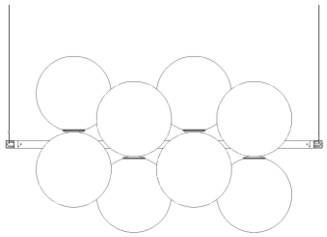


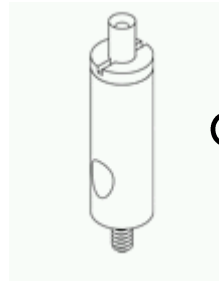
Holly Horizontal

Assembly Instructions ver 1.0

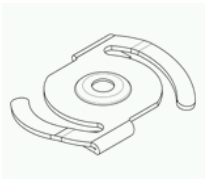
Including components:



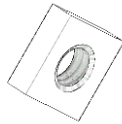
Holly (1x)



Gripper (2x)



Ceiling bracket (2x)
(T24 profile)

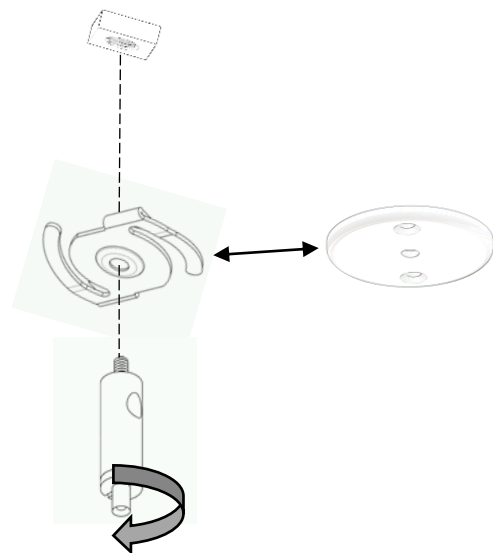


Nut M4 (2x)

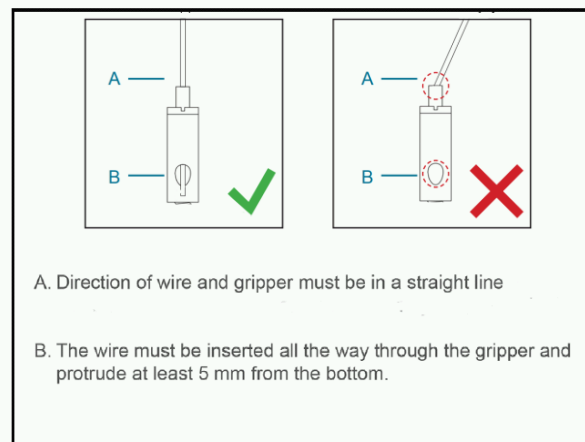
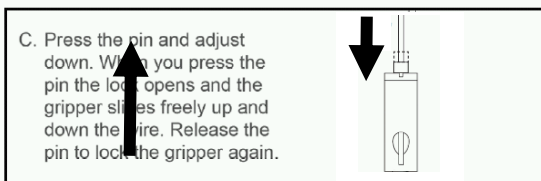
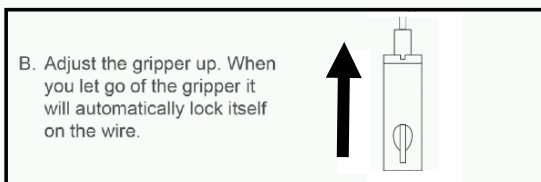
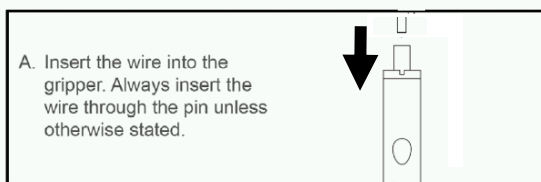


Roof bracket (2x)

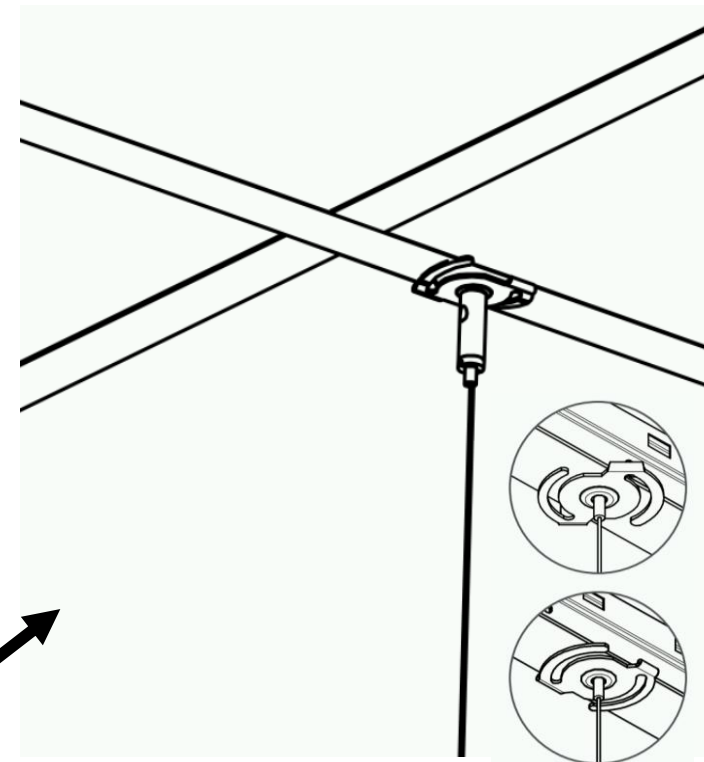
1.



2.



3.



For questions, contact Abstracta customer support

+46 472 26 96 00

Care instructions

To maintain the color and appearance of the Holly, the product should be vacuum cleaned regularly with a soft nozzle.

Stain removal, dab or wipe gently with a damp cloth.